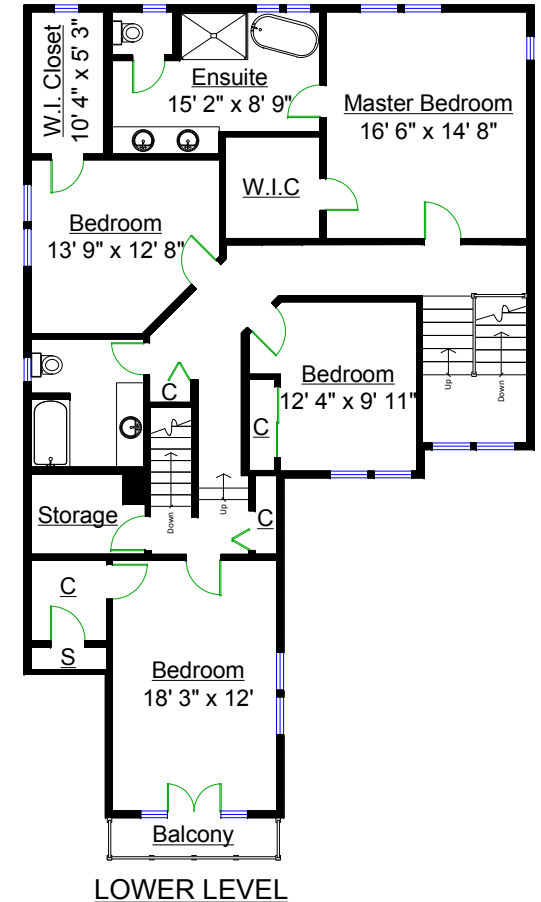
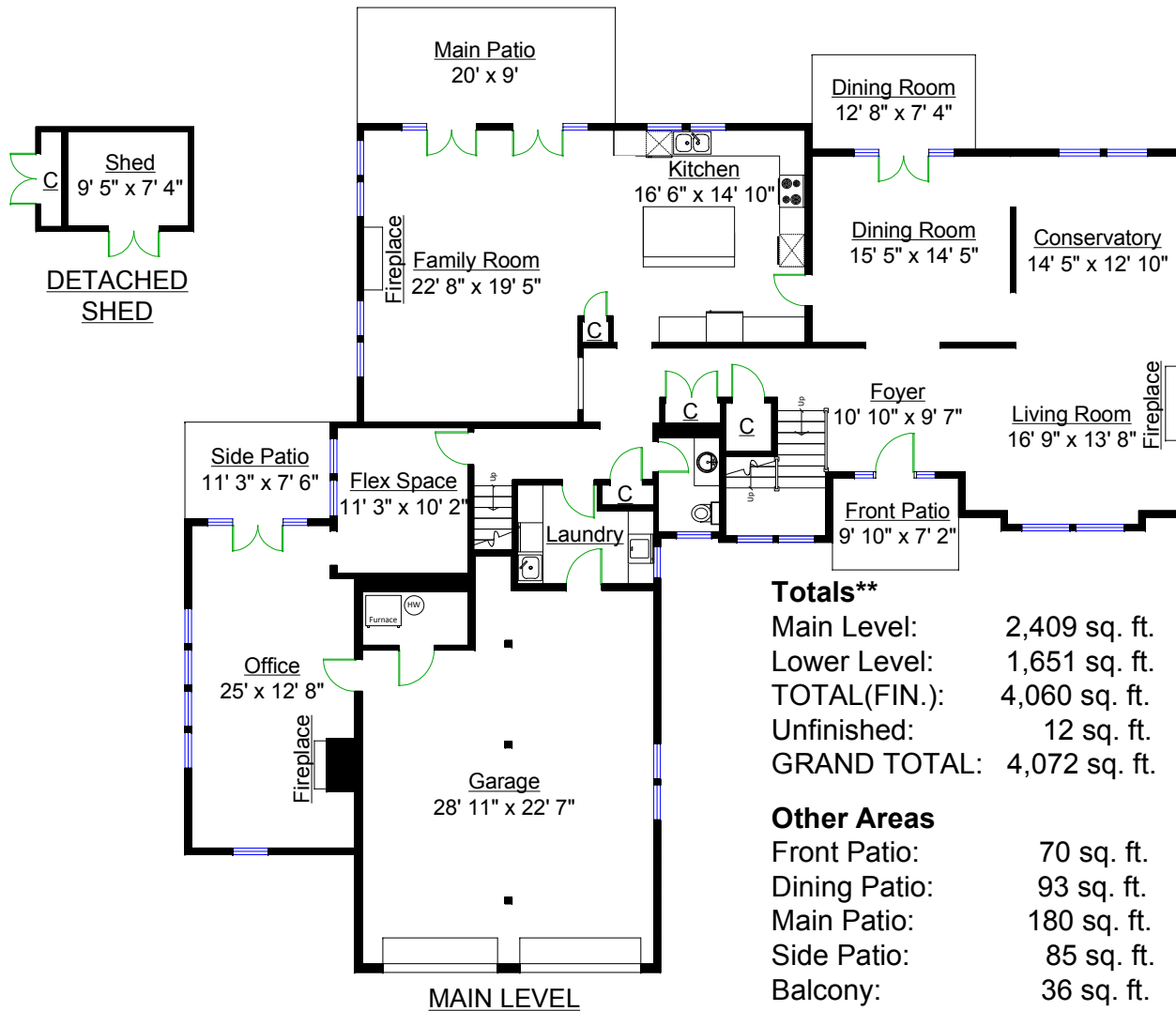


2347 129A Street, Surrey



Totals**

Main Level:	2,409 sq. ft.
Lower Level:	1,651 sq. ft.
TOTAL(FIN.):	4,060 sq. ft.
Unfinished:	12 sq. ft.
GRAND TOTAL:	4,072 sq. ft.

Other Areas

Front Patio:	70 sq. ft.
Dining Patio:	93 sq. ft.
Main Patio:	180 sq. ft.
Side Patio:	85 sq. ft.
Balcony:	36 sq. ft.
Garage:	657 sq. ft.
Mechanical:	40 sq. ft.
Shed:	99 sq. ft.
TOTAL:	1,260 sq. ft.